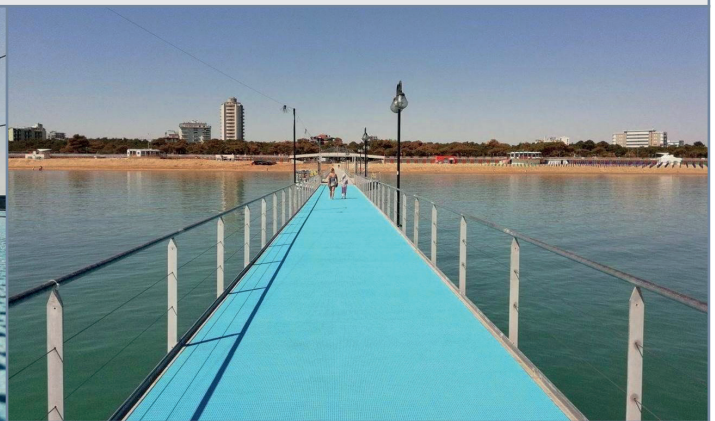
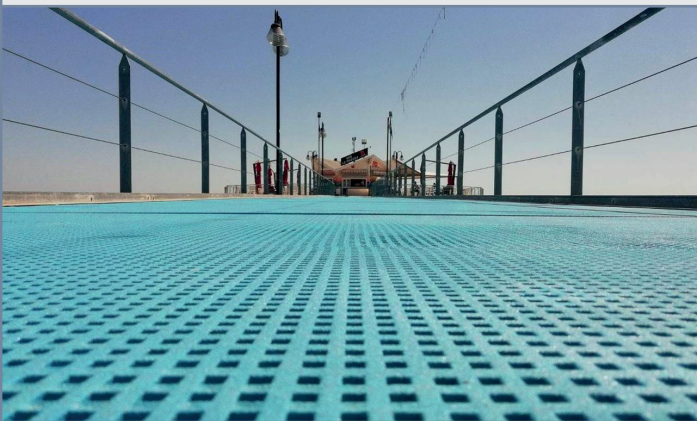


SEASIDE WHARF

CLIENT	PRIVATE COMPANY WITH CONCESSION OF A PART OF THE BEACH IN A FAMOUS SEASIDE RESORT IN NORTH-EAST OF ITALY
LOCATION	LIGNANO, PROVINCE OF UDINE, ITALY
USE	REMAKE OF THE WHARF FLOORING
PRODUCT	BLUE MDK 1230 MARINADECK GRATING
SERVICE	INDIVIDUATION OF THE BEST TECHNICAL SOLUTION



OBJECTIVE

After years of maintenance of the wooden wharf, the customer wanted to restyle the excellence symbol of its beach by seeking a solution that would renovate and brighten-up the structure. The goal was to find something aesthetically new but at the same time something functional, safe, and easy to preserve in the years.

SOLUTIONS

Choice ended-up on a composite material grating with the special Q-paint finishing called Marinadeck produced by M.M. This product resists to brackish environment, temperature leaps, U.V. rays, and has a low water absorption because of the Q-paint finishing and anti-slip surface according to the 51097 norm, suitable for walking barefoot.

The Q-paint finishing has been subjected to the strict pendulum test of the Australian Standard HB197, which certifies the maximum "slip class" level on wet surface even in a long period.

To the advantages that considerably reduce maintenance, you must also consider that they are lightweight and easy to handle. This allows placing of large size panels which reduces installation time. Furthermore, for this type of grating, M.M. has designed a special fixing system that guarantees maximum comfort for users because there are no protrusive parts.

The choice of M.M.'s Marinadeck grating binds the customer to 3 essential aspects: aesthetics, functionality and safety.